

Cervical Arterial Dysfunction implications for clinical practice

Roger Kerry, PhD



UNITED KINGDOM · CHINA · MALAYSIA

Image: Aarhus, Richard PJ Lambert





OUT WITH THE **OLD**

...IN WITH THE **NEW**

A black and white photograph of a person's hands holding an open book. The book is tilted, and the text on the page is visible. A red rectangular overlay is positioned in the upper left corner of the image, containing white text. Another red rectangular overlay is in the lower right corner, also containing white text. The background is dark and out of focus.

APA VBI-TYPE GUIDELINES

IFOMPT CAD FRAMEWORK



EXCELLENCE IN CARE
IFCMP
SINCE 1974

MEMBERSHIP ORGANISATIONS AND RIGS LATEST NEWS CONFERENCES AND EVENTS PUBLICATIONS & RESOURCES REGISTER TO BE A MEMBER

Home > PUBLICATIONS & RESOURCES > Cervical Framework Document

World Confederation for Physical Therapy
A SUBGROUP OF WORLD CONFEDERATION FOR PHYSICAL THERAPY

CERVICAL FRAMEWORK DOCUMENT

News Releases | Manual Therapy Research Review | Newsletters | Cervical Framework Document | Clinical Guidelines | Lectures in PDF | Historical Perspective

Click here for a copy of the Cervical Framework Document.

QUICK LINKS

- Membership Organisations and RIGs
- Standard Compliance & Training
- Latest News
- Conferences & Events
- Publications & Resources
- Register to be a Member
- Forums

CONTACT US

T: +64 9 476 5353
F: +64 9 476 5354

Level 2, The Professional Centre
38 Anzac Road
Browns Bay 0753
Auckland
NEW ZEALAND

© IFCMP 2014



THE PROBLEM



f o c u s

CONCEPT TOO **NARROW**

LOW SCORE



Risk of stroke
following HVT
is small (AR
0.005%)

Traditional
tests are poor
(+ve 'VBI'
test' = 0.006%
chance of
having stroke)

Risk of non-HVT
interventions >
HVT

What's the data saying?





TIME TO DRAW A **BIGGER** PICTURE







The AETIOLOGY of vascular disorders can be thought of on a continuum:





TWEETS 28 FOLLOWING 152 FOLLOWERS 71 LIKES 47

Chris Worsfold

@ChrisWorsfold1 FOLLOWS YOU

Physiotherapist specialising in neck pain.
The Tonbridge Clinic. Kent Neck Pain
Centre.

Tonbridge, England

uk.linkedin.com/pub/chris-wors...

 Tweet to

 Message

Tweets Tweets & replies Photos & videos



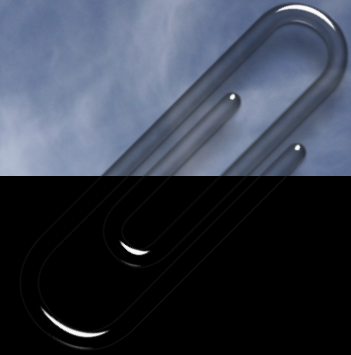
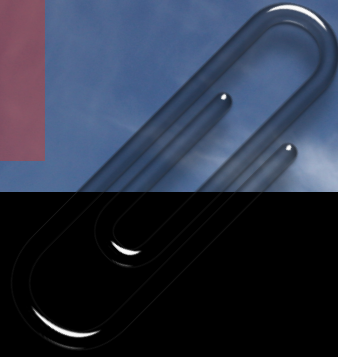
Chris Worsfold @ChrisWorsfold1 · Nov 11

Nurse wins damages in massage and CAD
case kentonline.co.uk/ashford/news/b...

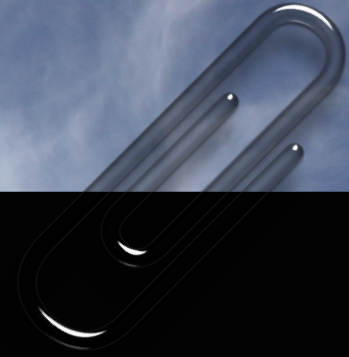
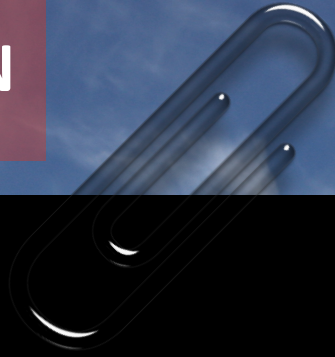
@TaylorAlanJ @RogerKerry1
@MartinDocherty2 @neiljlangridge
@c_hebron



HVT



PASSIVE EXTENSION





ELSEVIER

Contents lists available at ScienceDirect

Manual Therapy

journal homepage: www.elsevier.com/math



Original article

The immediate effect of atlanto-axial high velocity thrust techniques on blood flow in the vertebral artery: A randomized controlled trial[☆]



Jonathan W. Erhardt ^{a,*}, Brett A. Windsor ^b, Roger Kerry ^c, Chris Hoekstra ^d,
Douglas W. Powell ^b, Ann Porter-Hoke ^e, Alan Taylor ^c





ELSEVIER

Manual Therapy

journal homepage: www.elsevier.com/math

Original article

The immediate effect of atlanto-axial high velocity thrust techniques on blood flow in the vertebral artery: A randomized controlled trial[☆]



Jonathan W. Erhardt^{a,*}, Brett A. Windsor^b, Roger Kerry^c, Chris Hoekstra^d,
Douglas W. Powell^b, Ann Porter-Hoke^e, Alan Taylor^c





Denmark Denmark Denmark Denmark Denmark Denmark Denmark Denmark Denmark Denmark

Physical Activity Country Card: Denmark

Capital Copenhagen
 Inhabitants (2013) 5,613,706
 Life expectancy (2012) 80
 GINI inequality index (2011) 0.25
 Human Development Index (2013) 0.900
 Literacy rate (2003) 99%
 Deaths by non-communicable diseases 90%



Deaths related to physical inactivity

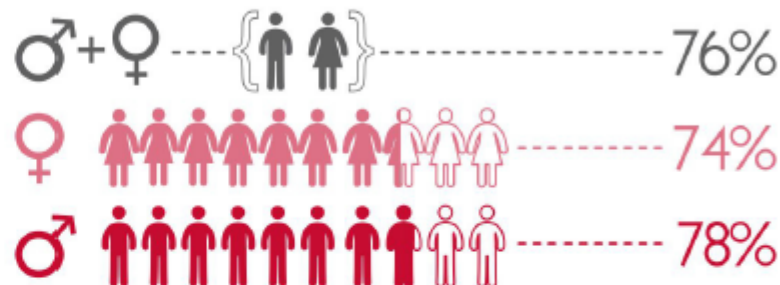
» 9.4% of all deaths in Denmark are due to inactivity.



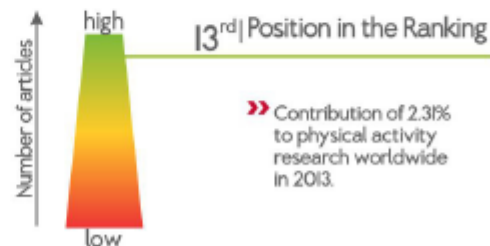
Surveillance and policy status

- | | |
|---|--|
| Physical activity plan | National survey |
| <input checked="" type="checkbox"/> Yes <input type="checkbox"/> No | <input checked="" type="checkbox"/> Yes |
| » Name:
Healthier life for all. | <input checked="" type="checkbox"/> First survey: 2010 |
| | <input checked="" type="checkbox"/> Most recent survey: 2013 |
| | <input checked="" type="checkbox"/> Next survey: 2017 |
| | <input type="checkbox"/> No |

Prevalence of Physical Activity | Age 18+ years



Research metrics (PubMed search in 2013)



For description of the indicators and data sources:
www.globalphysicalactivityobservatory.com/appendix

Icons by freepik

Contact information
 Name:
 Lars B. Christiansen

Institution:
 University of Southern Denmark
 Institute of Sports Science and
 Clinical Biomechanics
 Odense, Denmark



A global movement for movement

Moving professionals. Moving nations. Moving lives.

Open to everyone, a community of practice:

- 👂 learning together
- 👥 brought to life by working together
- 👏 held together through passion and the value of collective experiences





Article
Text



Article
info



Citation
Tools



Share



Responses

Editorial

Movement for movement: exercise as everybody's business?



Ann B Gates¹, Roger Kerry², Fiona Moffatt³, Ian K Ritchie⁴, Adam Meakins⁵, Jane S Thornton⁶, Simon Rosenbaum^{7, 8}, Alan Taylor⁹

Author affiliations +

<http://dx.doi.org/10.1136/bjsports-2016-096857>

Statistics from Altmetric.com



- Blogged by 1
- Tweeted by 604
- On 13 Facebook pages
- Mentioned in 1 Google+ posts
- 15 readers on Mendeley



Skiffle Show

17 Strike up a tune ...

TIME TO DRAW A **BIGGER** PICTURE



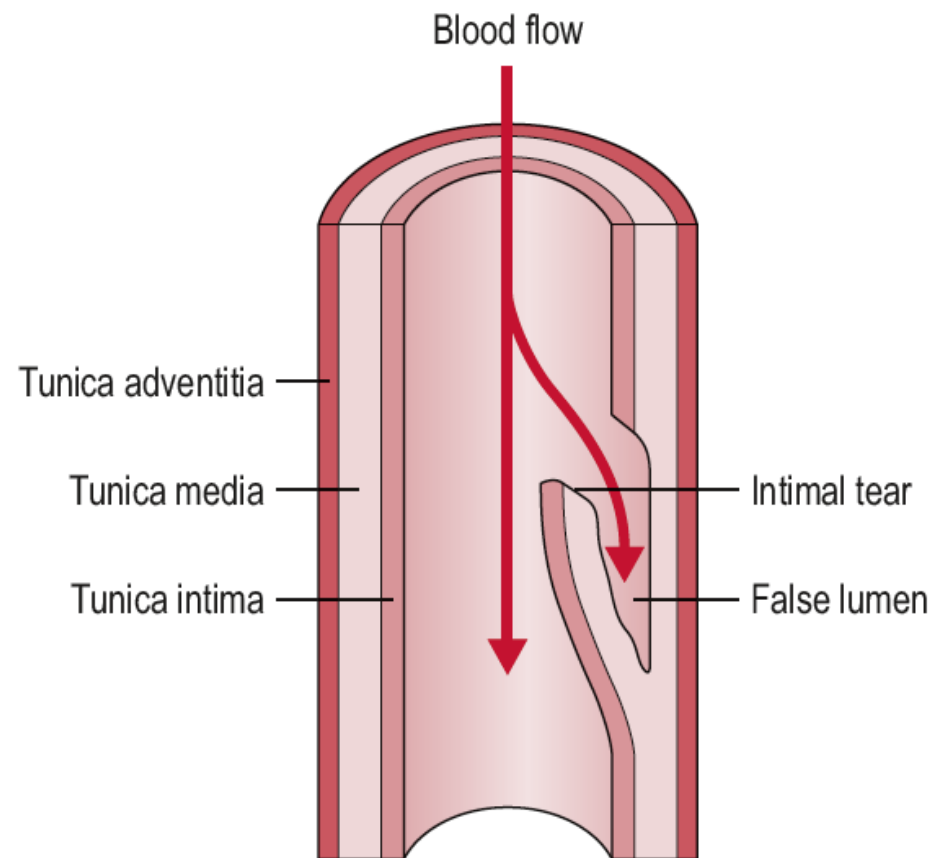


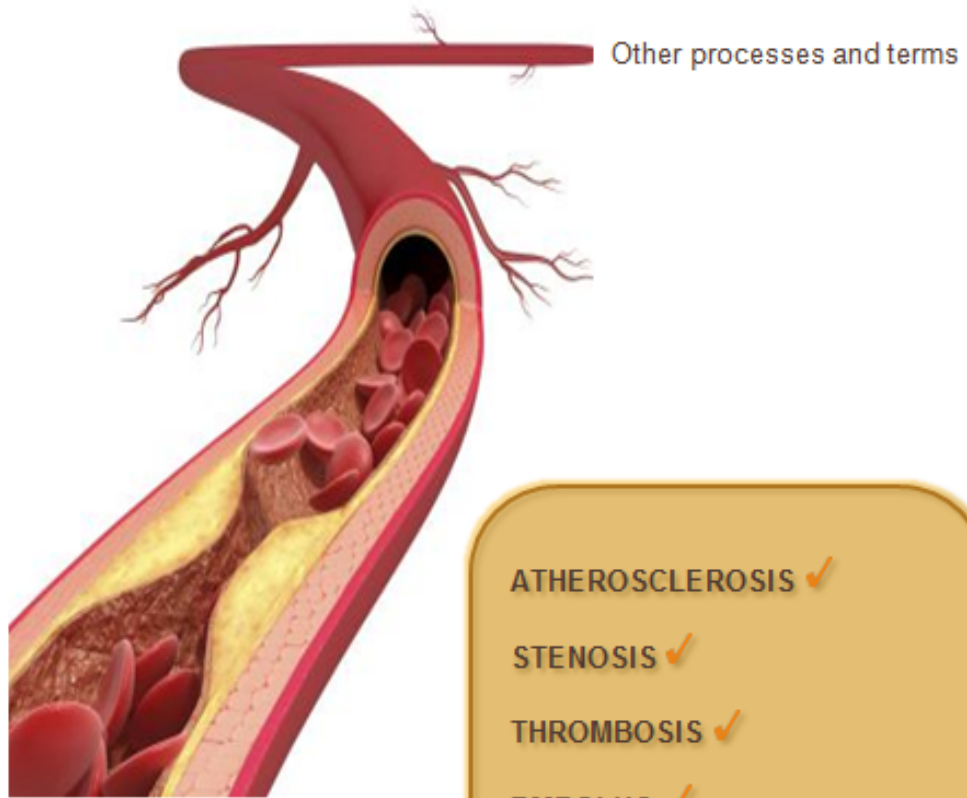
NECK AND HEAD

PAIN IS A COMMON
EARLY MANIFESTATION

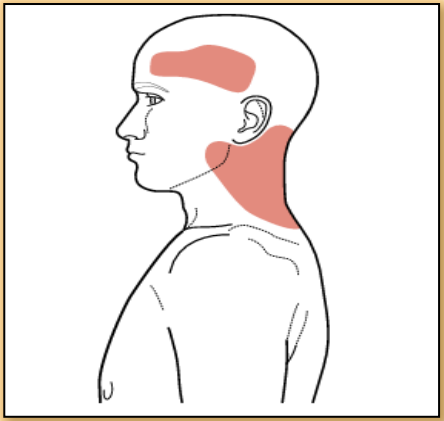
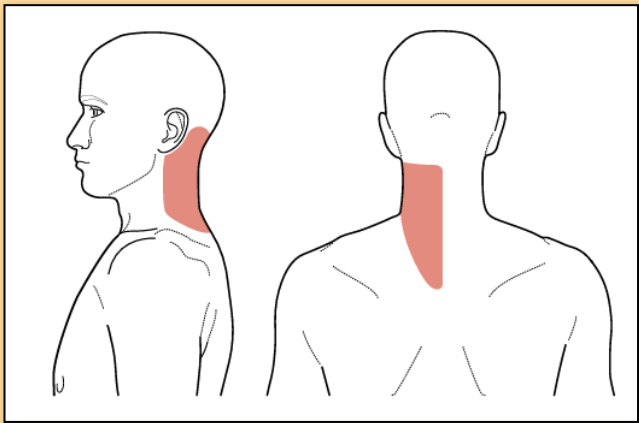
OF **CAD**

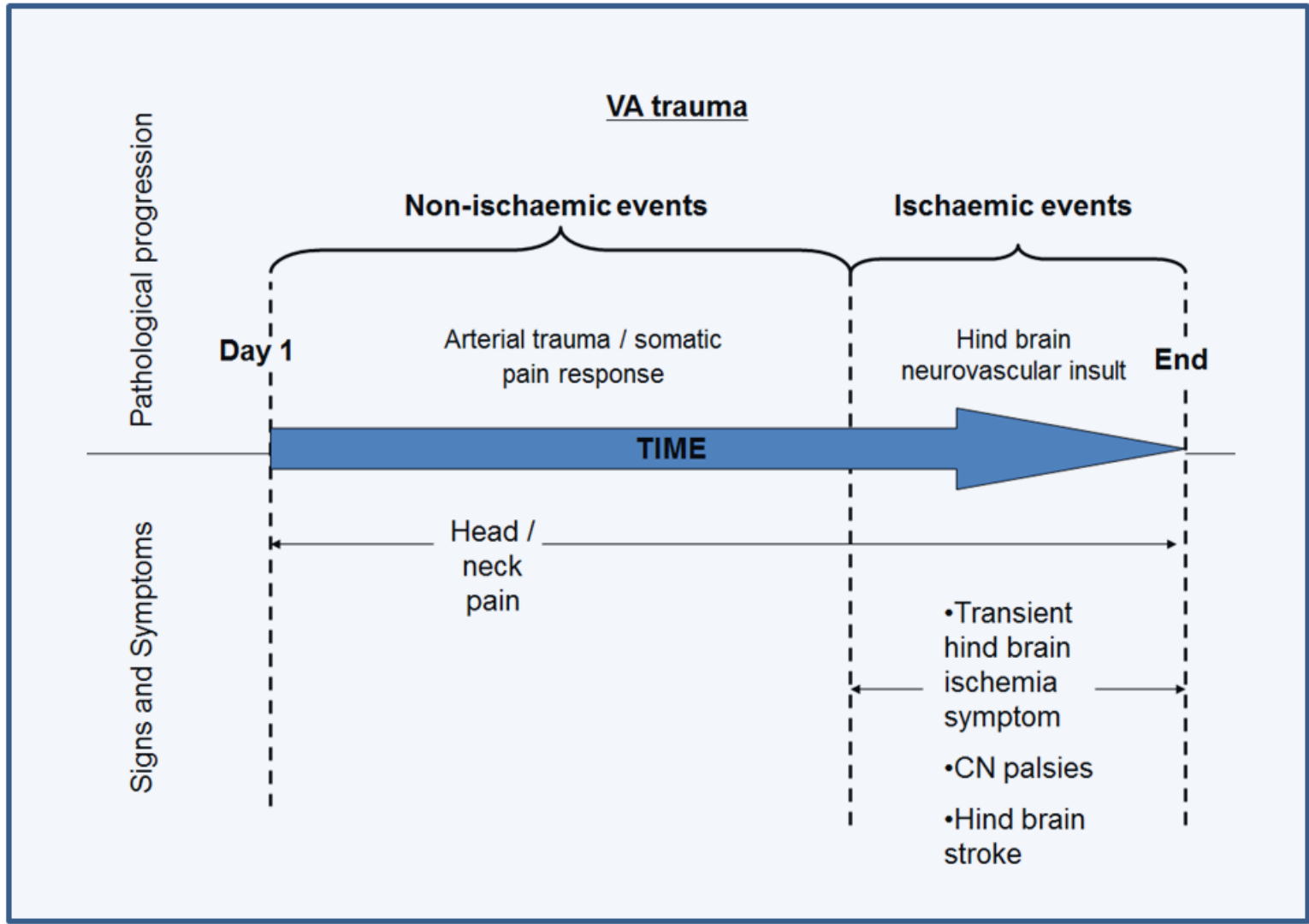
-Kerry et al (2008)

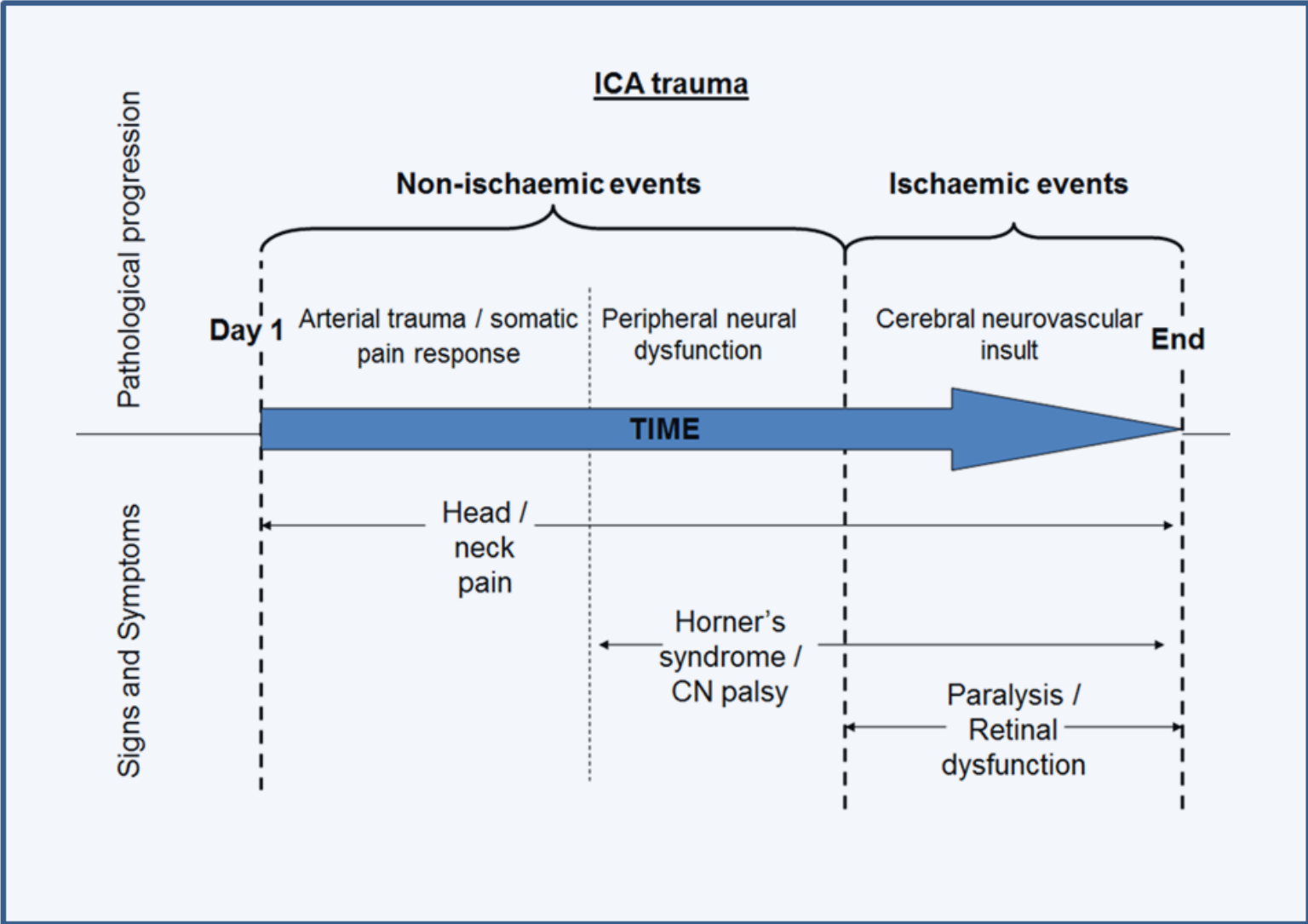


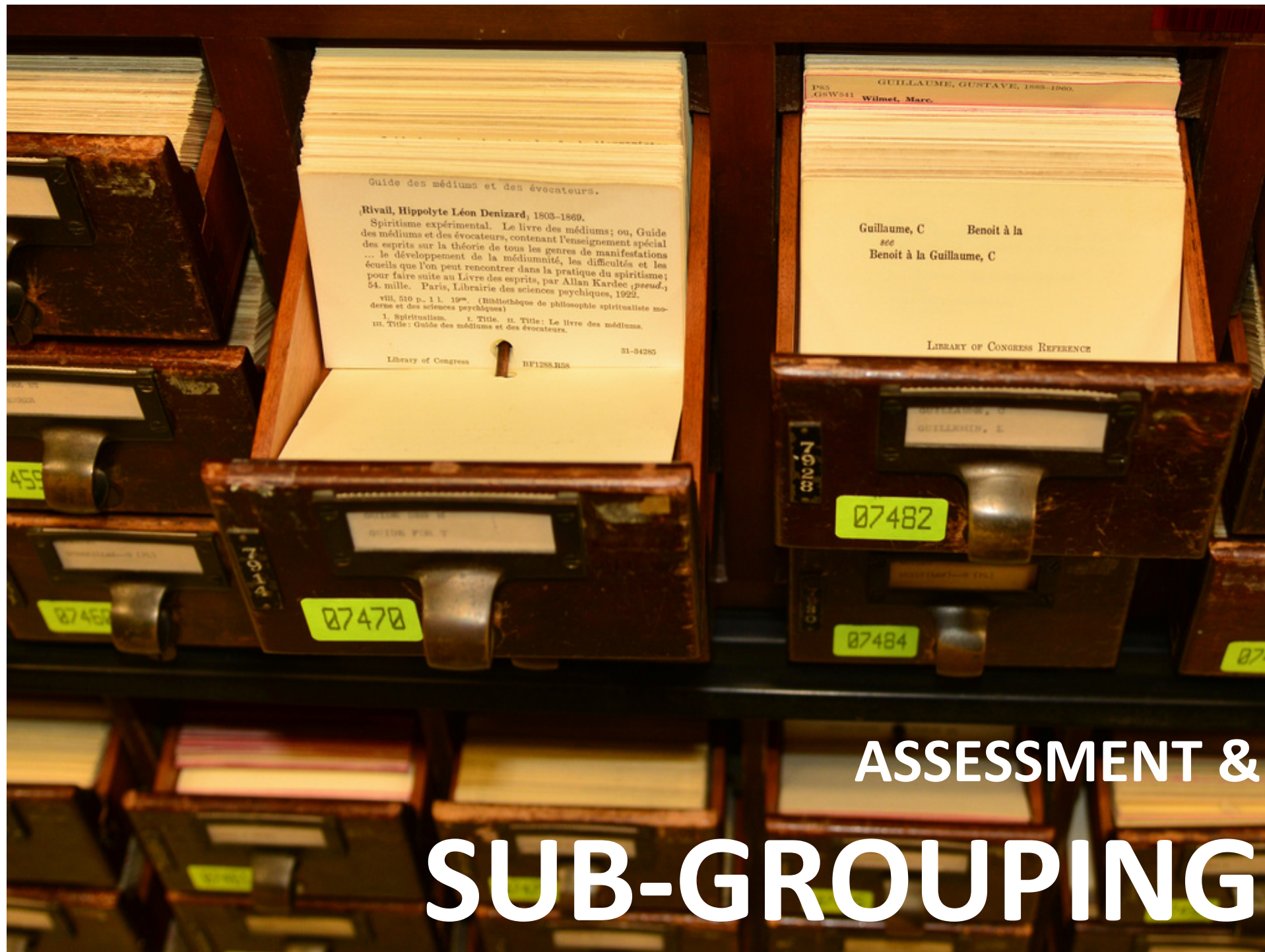


- ATHEROSCLEROSIS ✓
- STENOSIS ✓
- THROMBOSIS ✓
- EMBOLUS ✓
- ISCHAEMIC ✓
- ANEURYSM ✓









Guide des médiums et des évocateurs.

Rivail, Hippolyte Léon Denizard, 1803-1869.

Spiritisme expérimental. Le livre des médiums; ou, Guide des médiums et des évocateurs, contenant l'enseignement spécial des esprits sur la théorie de tous les genres de manifestations ... le développement de la médiumnité, les difficultés et les écueils que l'on peut rencontrer dans la pratique du spiritisme; pour faire suite au Livre des esprits, par Allan Kardec (pseud.); 54. mille. Paris, Librairie des sciences psychiques, 1922.

viii, 510 p. 1 l. 19^{cm}. (Bibliothèque de philosophie spiritualiste moderne et des sciences psychiques)

1. Spirituallism. I. Title. II. Title: Le livre des médiums.
III. Title: Guide des médiums et des évocateurs.

31-34285

Library of Congress

BF1288.R26

GUILLAUME, GUSTAVE, 1869-1860.

PS5
GRW541

Wilmet, Marc.

Guillaume, C Benoit à la
see
Benoit à la Guillaume, C

LIBRARY OF CONGRESS REFERENCE

07482

07484

07470

ASSESSMENT &

SUB-GROUPING

HISTORY

Identifying CAD risk factor

Smoking

Trauma

Infection

History of
migraine

CV
disease

Hypertension

Absence of
alternative
hypothesis

Diabetes

Anti-
coagulation
therapy



PHYSICAL EXAMINATION

Identifying CAD risk factors

Blood Pressure


Eye examination

Cranial Nerves

Gait / proprioception

Functional positional tests / other






THE RESULTS OF **BLOOD**
PRESSURE TESTING
MAY PROVIDE
DIRECTION FOR
MANAGEMENT OF
PATIENTS

-Taylor & Kerry (2013)

A close-up photograph of a person's eyes, looking directly at the camera. The eyes are a light brown color and are framed by dark eyeliner and mascara. The person's skin is fair and has a slight sheen. The background is dark and out of focus.

ENHANCE **ASSESSMENT**...WITH **CRANIAL**
NERVE AND **EYE** EXAMINATION

-Taylor & Kerry (2010)

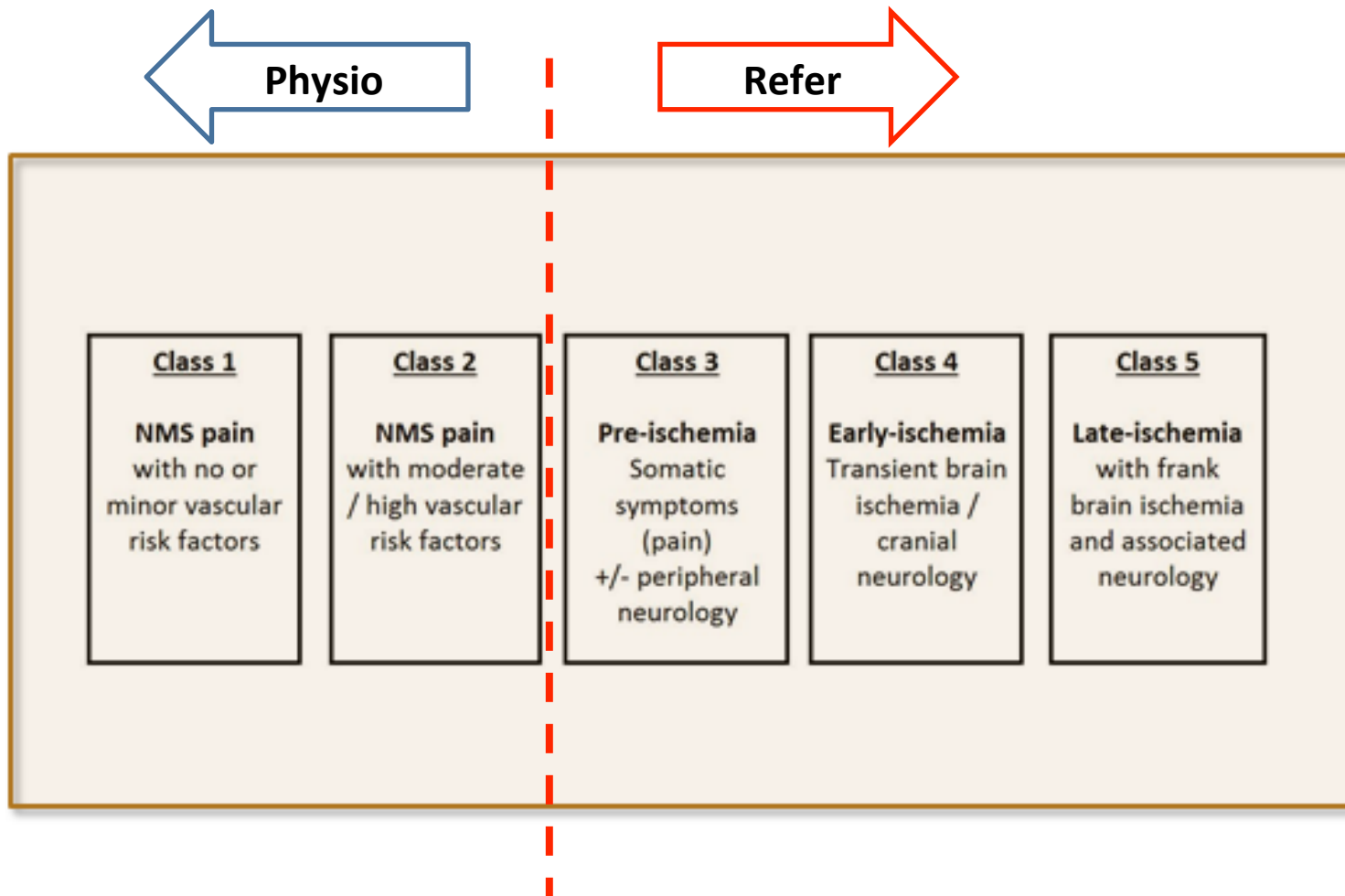
A green highway sign with white text and an arrow pointing right. The sign is mounted on a metal structure against a blue sky and a yellowish ground. The text on the sign reads "The Future" in a large font, "NEXT EXIT" in a smaller font below it, and a white arrow pointing to the right.

The Future

NEXT EXIT



The Nottingham CAD Classification Model (nCAD)



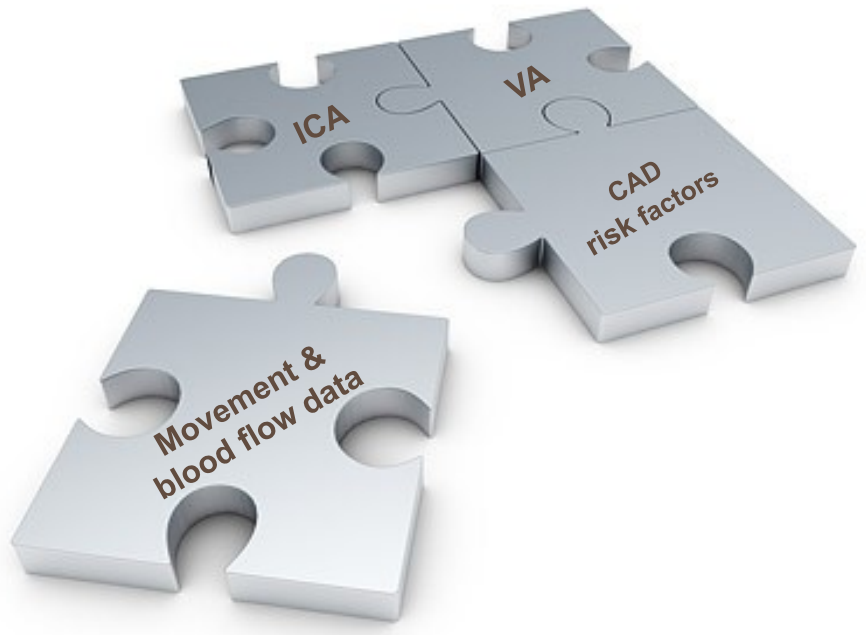


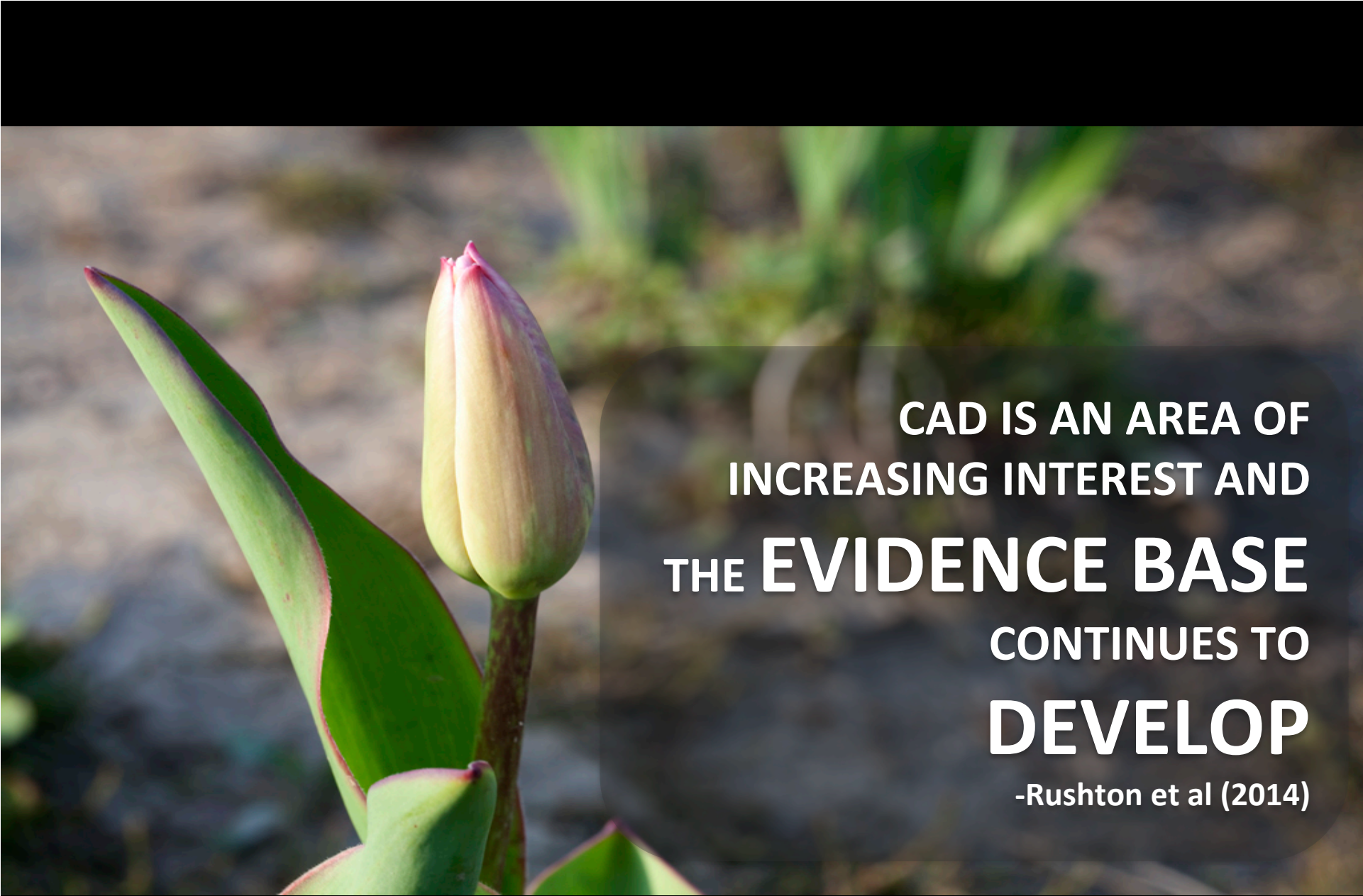
INTERVENTIONS



<u>Class 1</u>	<u>Class 2</u>
NMS pain with no or minor vascular risk factors	NMS pain with moderate / high vascular risk factors

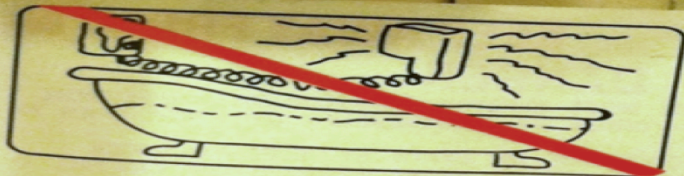
What is our reasoned framework for parameters of practice?





**CAD IS AN AREA OF
INCREASING INTEREST AND
THE EVIDENCE BASE
CONTINUES TO
DEVELOP**

-Rushton et al (2014)



**DO NOT REMOVE THIS TAG!
WARN CHILDREN OF THE RISK OF DEATH
BY ELECTRIC SHOCK!**

20 V

10 V



Mange Tak

Image: Aarhus, Neil Cummings